

**PRESS KIT RELEASE**  
January 2010

Contact: *West Coast Publicity* (424) 264-7246  
[sssjungle2@gmail.net](mailto:sssjungle2@gmail.net)

**Southland-based blues singer-songwriter/guitarist Shane O'Brien**

**Currently known as the "Genuine One"**

Shane O'Brien has been Writing/Recording, Producing/Performing in the Southland as well as across the USA and Canada for the past 26+ years. For most of the better part of ¾'s of those years his music of choice to share with his always receptive fan, family and friends is his own music.

From the very start O'Brien wrote, "That's The Way" at the tender age of sixteen, which he still performs live today (mostly by audience requests). Shane O'Brien writes songs that relate to individual life experiences. Those good, bad and yes, even the worst of the ugly times that O'Brien has experienced. The kind of things most everyday folks have too, but don't really care to publically share. Shy of what others may think, Shane reaches down deep inside to quash this need to get it out. Resulting in a variety of emotions lyrically delivered, and he does just that, deliver. Many who have experience *Shane O'Brien and O'Briens Edge "live"*, or acquired any one of the 24 CD's Shane has written/recorded, have written letters or placed phone calls to Shane's studio in San Pedro, California. These letters are frequently found framed and mounted on the walls of that studio, which is known locally as *The Jungle Studio*. "That is where the magic happens..." a quote by Bassist, Sammy Persons, former O'Briens Edge family member.

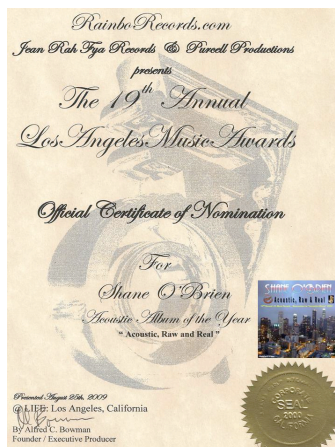
Each album is packed with music and words of tales many listeners have claimed as their own. "He wrote that song for me..." "I have had that said to me countless number times anywhere I have played or contained in messages sent to me" as described by this Artist. It's true that once his music is really heard by individuals and played a few times, it begins to grow and become more than a song. It forms a signature sound in your ears and inevitably, right down in your heart. Contained within Shane's music is the real stuff that we all know and live through ourselves... not fantasy, the real stuff. It's not too much of stretch to understand why Shane O'Brien titled The O'Briens Edge CD released early this year as being "The Genuine One" ©2007, ©2009.

**Tom Branson** respected Editor of [WWW.BLUESROCKERS.WS](http://WWW.BLUESROCKERS.WS) (December 2005):

*"Canadian-born Shane O'Brien is a San Pedro, California-based singer/songwriter/guitarist whose work is reminiscent of a time when musicians were regular working class people armed with only an instrument of choice and something of substance to say..."*

*It Goes On To Say: "O'Brien's approach to music is raw and honest; simple and straight-forward; genuine and emotional, which I would guess mirrors his approach to life in general. By day, he is a Union Ironworker (Local 433, Los Angeles) rubbing elbows with America at the very ground level. By night, he is somewhat of an urban troubadour traveling from place to place with guitar in hand and songs about life in his heart. This is American rock music performed by someone to whom a lot of Americans should identify."*

Shane O'Brien is currently nominated for  
**"Acoustic Album of the Year 2009"** For the 19<sup>th</sup> Los Angeles Music Awards.  
Voting Night is at the Whiskey a Go Go in Hollywood, CA.  
The consensus is that *O'Brien* has a great chance at this year's  
Acoustic Album of the Year 2009 prized award!!!



Thank You Al Bowman, ceo L.A. Music Awards for making the nomination notification call to me in person, along with some very complimentary words that I will cherish for years to come.

### **From the Humblest of beginnings in Venice and Inglewood California!**

In 1983, a gig consisted of 75% covers / 25% originally written songs by Shane. For example, 75% cover's meant, that night's itinerary pretty much consisted of Blues/Rock music written by icons such as Jimi Hendrix, Eric Clapton, Johnny Winter and ZZ Top, ZZ Hill Bobby Bluebland, Ed Burns, Bo Bo Jenkins and Shane's all time blues favorite – John Lee Hooker. All the legends, God Fathers, Kings, or Soul Men, Originator's of the Blues and the Iceman himself. You know what I mean here, innovator blues artist such as Muddy Waters, Buddy Guy, B. B., Albert and Freddie King and Hound Dog Taylor. Delta Bluesmen contributed as well, such as Robert Johnson, Sonny Boy Williamson, Howlin' Wolf, Lightnin' Hopkins and coarse Son House.

That 75% cover song list also included works from the more mainstream Blues/Rock bands as well. Shane loved to play and sing that classic biker anthem by Steppenwolf, "Born To Be Wild", "You can't always get what you want" by the Stones or Santana during the early his years of "Black Magic Woman". Add in rock classics by Led Zeppelin "Rock and Roll", the heaviest in the Cream classic album – "Disraeli Gears" not to forget Ted Nugent's influence from song "White Buffalo" and the albums "Tooth, Fang, Claw" & Ted Nugent Live performance at Cobo Hall in Detroit of "Stranglehold".

This is a good example of many of the influences that Shane O'Brien chose to learn from. Even three decades later O'Brien's lyrical delivery, musical writing style and choice of instrumentation in his recordings and song performance can be directly attributed to those early songsmiths and personal heroes to Shane.

Today, some 26+ years after this Canadian Born musician arrived in Inglewood, California, things have changed. If you add up the sum total of the all nighters after gigs, the struggling to get enough pay per gig to intentionally create changes from gig to gig. Changes that started to abruptly evolve from mid 1999. That is when that 75/25 ratio flip flopped around seemingly overnight. By the New Years Eve 1999/2000 gig, the nights music was all written by O'Brien, occasionally adding an SSS rendition of a favorite author. Even the choice of language as Band Leader was changed. From a blindly going forward orchestration on the band stand to unseen body language and hidden signs to the talented sidemen musicians that O'Brien's Edge commanded. from coast to coast. This period in time, post the heaviest of the starving, the alone lonely days and weeks without a dime to call my own. Shane O'Brien is currently sitting on a year that has garnered two Original Music CD releases for 2009 and an 8 track DVD of Live Performances. The 2009 CD/DVD releases for 2009 are as follows:

### **Shane O'Brien – The CD/DVD releases that have been made available during 2009.**

- 1. *The Genuine One* ©2007 ©2009 CD \_12 Tracks 67:54**
- 2. *Acoustic, Raw and Real* ©2007 ©2009 CD \_ 10 Tracks 49:20**
- 3. *What's Up With That?* ©2009 DVD \_ 2 Cuts 16:27**  
**Included:**
  - ☐ **Slide Show with Studio Cut** also a Shane O'Brien
  - ☐ **Live 2009 Solo Acoustic Performance.**
- 4. *8 Fresh One's From Southern California* 2005-2009 ©2009 DVD \_ 8 Video Tracks**  
**Video recordings of Shane O'Brien performing solo and with O'Brien's Edge that include:**
  - **2005 UCLB TV Interview** – "Long Beachin' With Mo" with Host Mo Power.
  - Live Solo On Air Performance of "New York City, What a Lady!" (ACOUSTIC)**
  - **2006 four "Live" tracks**, video recordings of *Shane O'Brien and O'Brien's Edge* as the show opener for **Legendary Johnny Winter** at BB King's Blues Venue in Hollywood, CA.
  - **Love That Woman • Made In the Shade • The Devil's Kitchen • What's Up With That? •****Uncut and untouched. (RAW)**
  - **2009 Two Video renditions of "What's up with that?" © 2007 ©2009 – (AND REAL)****(This is Shane's Tribute Song to our men and Women in Uniform) Included are both DVD Tracks:**
  - ☐ **A Slide Show featuring the *W.U.W.T.* audio track release from CD *The Genuine One* © 2007 ©2009**
  - ☐ **Live Outdoor Sound Stage taping of Shane playing this *Infectiously Patriotic Creation...***

**Created, Written and Produced in its entirety by Shane O'Brien c/o Jungle Music Productions**

**P.O. Box 1668, San Pedro, CA 90733 E-Mail: [sssjungle@sbcglobal.net](mailto:sssjungle@sbcglobal.net) Telephone: 424.264.7246**

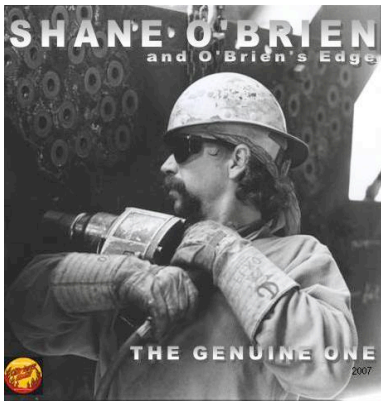
**All rights reserved. Unauthorized reproduction is a violation of applicable laws.**

**Printed in the U.S.A**

**Contact Information:** Jungle Music Productions  
P.O. Box 1668  
San Pedro, CA 90733  
Tel. 310.832.2430  
<mailto:sssjungle@sbcglobal.net>

**Personal Management:** Pasquale "Philly" Cudemo  
Hermosa Beach, CA. Tel. 310.987.8045 [sssjungle2@gmail.net](mailto:sssjungle2@gmail.net)  
**Media:** West Coast Publicity Services, Los Angeles, CA.  
Tel. 424.264.7246





CD – The Genuine One  
 Artist: Shane O'Brien and O'Brien's Edge  
 Written and Produced by:  
 ©2007©2009 Shane O'Brien  
 Jungle Music Productions  
 • 12 Tracks • Time 67:54  
 • Available at:

► [CDBABY.COM/SHANE OBRIEN](http://CDBABY.COM/SHANE OBRIEN)

And Our Official site late this Fall:

► <http://www.obriensedge.com>

Featured Tracks:

-Family and Friends



CD – “Acoustic, Raw and Real”  
 Artist: Shane O'Brien and O'Brien's Edge

Written and Produced by:  
 ©2007©2009 Shane O'Brien  
 Jungle Music Productions  
 • 10 Tracks • Time 49:20  
 • Available at:

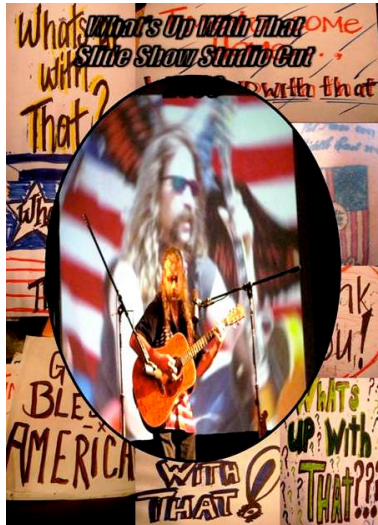
► [CDBABY.COM/SHANE OBRIEN2](http://CDBABY.COM/SHANE OBRIEN2)

And Our Official site late this Fall:

► <http://www.obriensedge.com>

Featured Tracks:

Love That Woman



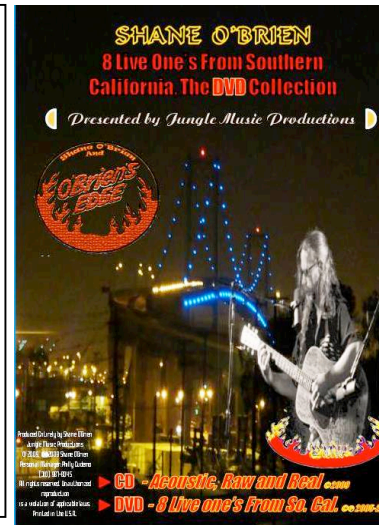
DVD – Visual Slide Show and the studio audio sound track recording of What's Up With That?

Written and Produced by:  
 ©2007©2009 Shane O'Brien  
 Jungle Music Productions  
 • 1 Track • Time 7:27  
 • Available at:

Our Official site late this Fall:

► <http://www.obriensedge.com>

Features: Visual imagery added to a Shane O'Brien dedication to American Men and Women serving, (past and present) in our armed services. \$3.00 from each DVD sold will be a donation to the Homeless Veterans Initiative of the LA/Long Beach communities.



DVD/CD Set:

► 8 Live one's From So. Cal.  
 DVD Time 49:20

► Acoustic, Raw and Real CD

Written and Produced by:  
 ©2007©2009 Shane O'Brien  
 Jungle Music Productions  
 • Available at Our Official site

► <http://www.obriensedge.com>

► 8 Live one's From So. Cal.-DVD

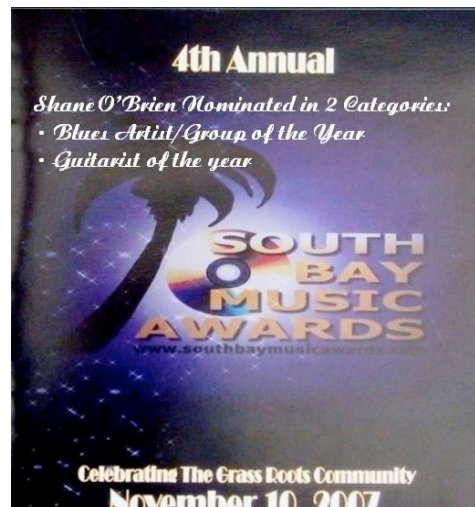
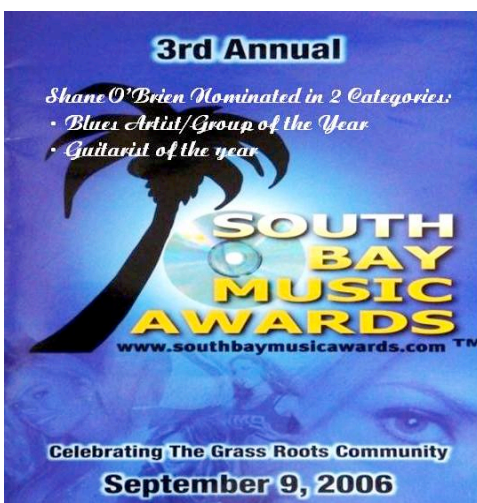
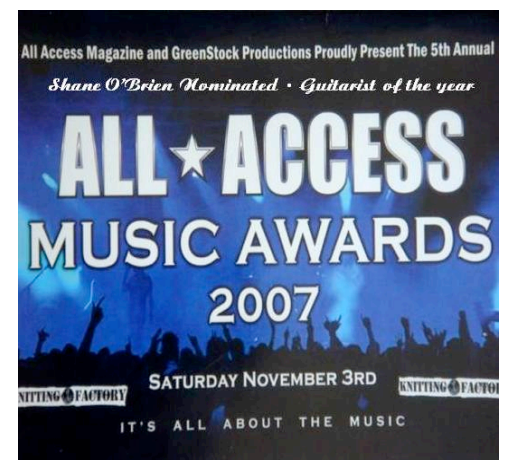
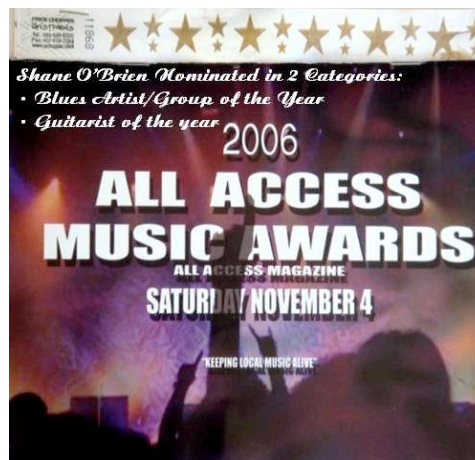
-A combo of “Live” performances by Shane O'Brien at Studio Soundstages, Club Shows and Television Interviews throughout Southern California from 2005-2009. Includes: both 2009 renditions of “What's up with that?”

• Studio Cut with Slide Show

• “Live” Solo Performance by O'Brien Plus

► Acoustic, Raw and Real - CD

Los Angeles Music Awards Nominated Acoustic Album of the Year 2009







## The Media Have Responded To Shane O'Brien and His Music:

**Tom Branson:** respected Editor of [WWW.BLUESROCKERS.WS](http://WWW.BLUESROCKERS.WS) (December 2005):

"Canadian-born Shane O'Brien is a San Pedro, California-based singer/songwriter/guitarist whose work is reminiscent of a time when musicians were regular working class people armed with only an instrument of choice and something of substance to say..."

"O'Brien's approach to music is raw and honest; simple and straight-forward; genuine and emotional, which I would guess mirrors his approach to life in general. By day, he is a Union Ironworker (Local 433, Los Angeles) rubbing elbows with America at the very ground level. By night, he is somewhat of an urban troubadour traveling from place to place with guitar in hand and songs about life in his heart. This is American rock music performed by someone to whom a lot of Americans should identify."

**Jim Santella** in [SOUTHLAND BLUES](http://SOUTHLAND BLUES) (November 2005):

"O'Brien's dedication to melody makes for a beautiful ballad and a lovely folk song. With his faster, hard rock selections, the scene shifts, and his voice burns with intensity."

**~Dark, Bill Messick** [reviews@newartistradio.net](mailto:reviews@newartistradio.net) This is some very sweet blues rock music, some of the best I have ever heard! Makes me want to go out and find a Irish pub and down a 1/2 dozen beers! This is right down party stuff...



**- Dave Howell:** Music Editor, [SOUTHBOUND BEAT MAGAZINE](http://SOUTHBOUND BEAT MAGAZINE) Shane O'Brien is nuts. And like Seinfeld might say, there is nothing wrong with it. In this case, it produces a startlingly original CD.

O'Brien parts sings and parts raps over his electric guitar playing, rambling in a subdued voice about subjects that concern him. "My Love Letter" is a great example of the strange explorations this CD takes, as someone starts the track by saying he is from San Pedro California and is into Jesus Christ, while O'Brien asks him about his having a *Wife Insurance* policy.

There are a lot of long, well crafted rock jams here with O'Brien and his friends. All have an interesting, organic sound.

O'Brien says on a message board that he has twenty-two CDs that he will soon make available on a website. This might put him in the territory of Jandek, another prolific artist whose reputation has grown because of his unique vision.

This lo-fi CD could be the beginning of a cult following for O'Brien, a singer/songwriter unlike any other.

Erinn Soule: [SouleD Out Music](http://SouleD Out Music) Biker Born, Music Bred is the best way to describe this Iron Worker from San Pedro, California! Shane O'Brien is known for his West Coast Blues with an East Coast attitude. Shane has what most musicians don't, the ability to be diverse, to write his own life into his own music and magically draw his audience in. He is a true audience pleasure and sounds GREAT on his acoustic sets, for those times you may need a softer sound for your event...now if you are looking to boogie down to a little classic blues...he is your man!

### To contact Shane O'Brien:

Jungle Music Productions: P. O. Box 1668, San Pedro, California 90733

E-Mail: [sssjungle@sbcglobal.net](mailto:sssjungle@sbcglobal.net) Tel: 424.264.7246

Managed by Philly Cudemo, West Coast Publicity, Los Angeles, Ca 310.987.8045 E-Mail: [sssjungle2@gmail.net](mailto:sssjungle2@gmail.net)